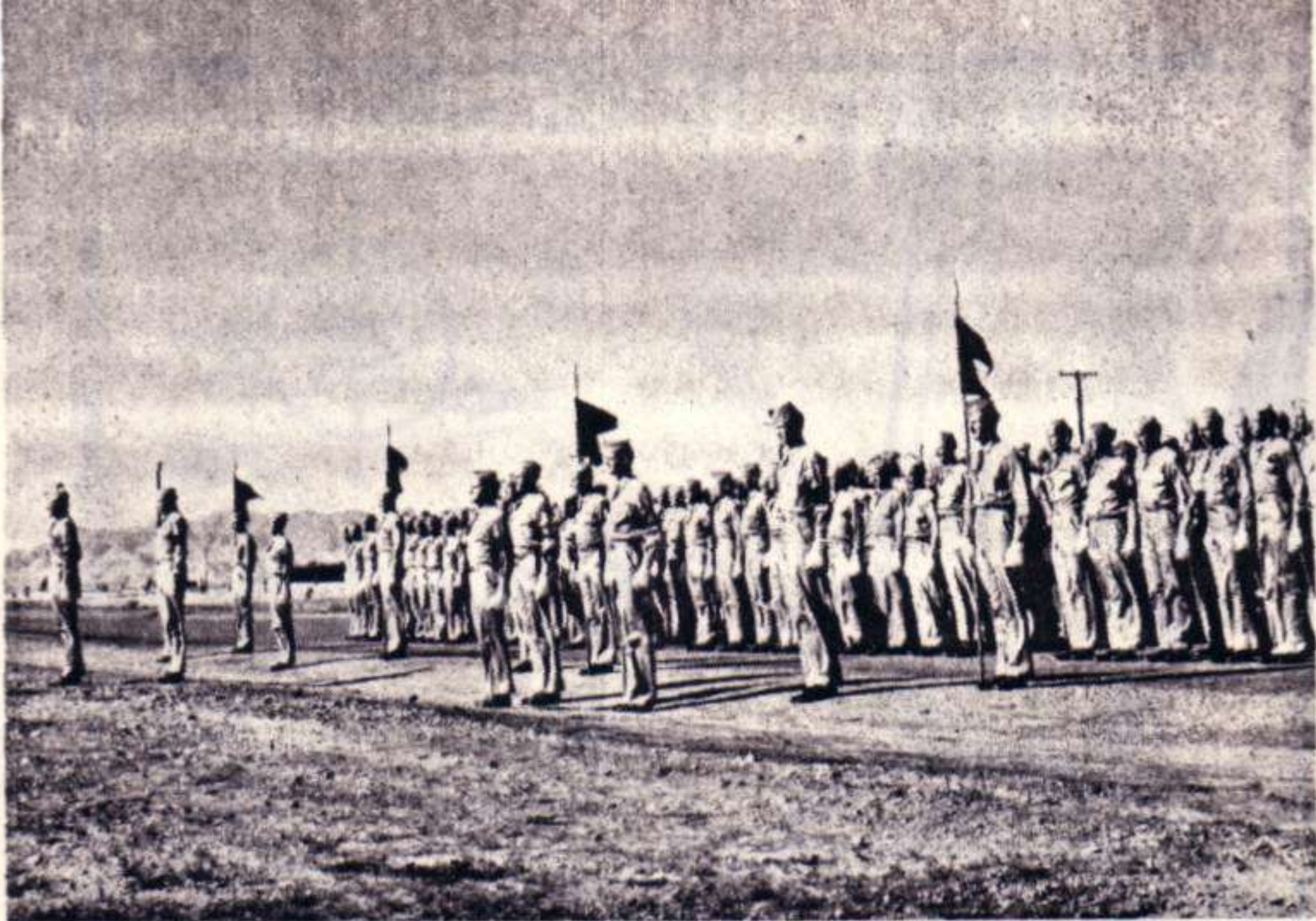


HANDY GUIDE TO  
DOUGLAS ARMY AIR FIELD



*A Handy Guide to*  
**DOUGLAS ARMY AIR FIELD**

ROBERT B. REUTLINGER  
 5. 3009 BERNARD  
 SPOKANE, WA. 99203  
 509-456-6968

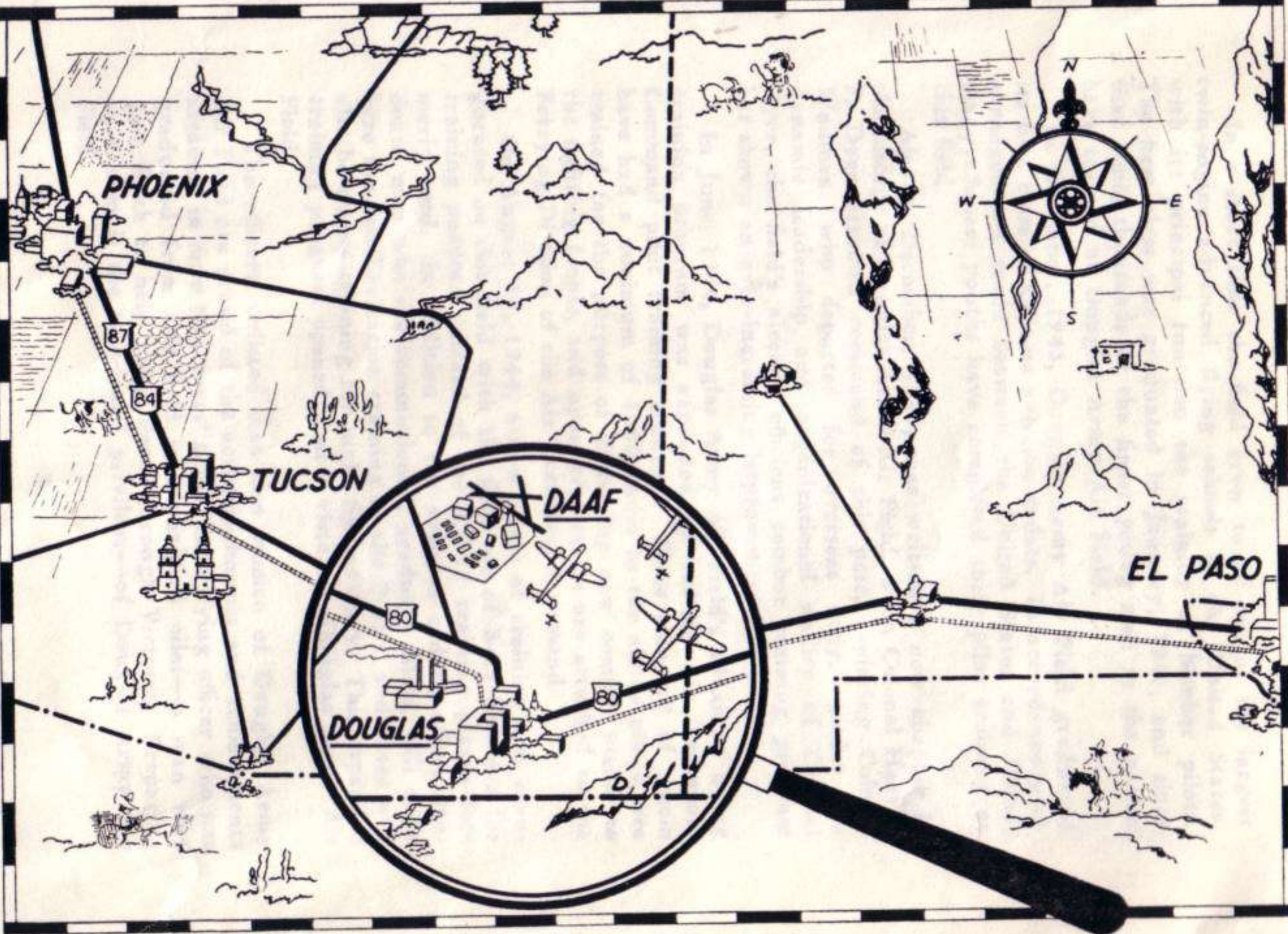


DAAF aviation cadets stand at "Attention" as the call sounds for Retreat.

## *History of Douglas Army Air Field*

A year before Pearl Harbor, the present site of Douglas Army Air Field was under construction as a commercial airport. Located ten miles north of the city of Douglas, Arizona, in Sulphur Springs Valley, surrounded on all sides by mountains, this spot was chosen because of the even climate, short rainy season, and freedom from persistent fog, thereby permitting all-year-round flying.

During April of 1942, the Army Air Forces became interested in the new airport as a possible advanced flying school, and on May 28, 1942, Douglas Army Air Field was activated with a skeleton crew of military personnel under command of Colonel John F. Wadman.



PHOENIX

TUCSON

~~DAAF~~

DOUGLAS

EL PASO

87

84

80

80



In a short time the field grew to be one of the largest twin-engine advanced flying schools in the United States, with its principal function the training of bomber pilots. The first class was graduated in January, 1943, and since that time, thousands of the finest young men in the nation have trained at Douglas Army Air Field.

In December, 1943, Douglas Army Air Field graduated its first class of Chinese aviation cadets. In accordance with arrangements made between the United States and China, many Chinese youths have completed their pilot training at this field.

Also in December, 1943, was written a new chapter in the history of Douglas Army Air Field, when Colonel Harvey F. Dyer assumed command of this post, replacing Colonel Wadman, who departed for overseas duty. Under the dynamic leadership and organizational ability of Colonel Dyer, the field's already efficient combat training program has shown an ever-increasing improvement.

In June, 1944, Douglas Army Air Field's advanced flying training program was expanded to include Air Transport Command pilot training students. These men, all of whom have had a minimum of 1000 hours in the air as pilots, are trained for the purpose of delivering new combat planes to the fighting fronts, and upon graduation are attached to the Ferrying Division of the Air Transport Command.

On August 17, 1944, a new phase of training was inaugurated on this field with the first use of B-25 bombers for training purposes instead of the AT-17 training planes formerly used. In addition to the aviation cadets, officer students, men who are commissioned, graduate pilots, will come here for familiarization training in the B-25's, and there will also be classes training for night fighter duty. This expanded training program opened a new vista for Douglas Army Air Field.

The officers, enlisted men and women of Douglas Army Air Field are proud of the accomplishments and achievements attained in only two years' time. Each flying officer who has graduated from this field is a qualified pilot—a man who goes forth to help bring Peace through Victory. Preparing such men is the task—and privilege—of Douglas Army Air Field.



**WELCOME TO DOUGLAS**—This sign greets you as you alight from the train at the Southern Pacific station in Douglas.

## *Douglas*—"THE FRIENDLY CITY" IN THE HEART OF THE OLD WEST!

Named for the distinguished mining engineer, Dr. James Douglas, the city of Douglas is located on the Mexican border, directly across the street from Agua Prieta, Sonora, Mexico. Situated in the "maximum sunshine belt," it lies on U. S. Highway 80 which runs from the Atlantic coast to the Pacific, U. S. Highway 666, the Canada-to-Mexico Highway, on the main line of the Southern Pacific Railroad, the Pacific Transcontinental Stages, and the southern transcontinental air route.

Surrounding Douglas and the fertile Sulphur Springs Valley are mountains in which Geronimo and his Indians used

to hide from the Federal troops stationed at historic Fort Huachuca. A short distance from Douglas is the town of Bisbee, one of the most wealthy copper mining centers of the nation. Douglas' principal industry is the large Phelps-Dodge smelter where the copper mined at Bisbee is treated. A short distance beyond Bisbee is Tombstone, once one of the wildest boomtowns in the West.

Douglas itself is a progressive mining, cattle and agricultural center. Its 4000-foot elevation insures clear, cool nights the year round and a low humidity count. The winter days are dry and sunny.

Near Douglas, in the Chiricahua Mountains, is the famous "Wonderland of Rocks," more than ten thousand acres of colorful, fantastic rock formations. This scenic work of nature is something that no visitor to southeastern Arizona should miss.

**THE SMELTER**—Douglas' outstanding landmark, the smelter, stands outlined against the colorful Arizona sky.





## Telephone Information

We're sorry when delays occur on your long distance calls. Ordinarily we would build more lines, but the materials needed are providing communications for our advancing forces on every front and helping speed the job here at home. We appreciate your patience and understanding.

*But here are  
a few tips  
which may speed  
Your Service on  
Long Distance  
calls...*





1. Call EARLY on Sundays. Rates are reduced all day.
2. If you can call a few days before or after pay day you'll avoid the stampede.
3. Call by number when you know it.
4. If you're sure you'll reach the person you want when you make your call, place a station-to-station call. It's cheaper. Just tell the operator the town you are calling and the number of the telephone you want. If you don't know the number, tell the operator how it is listed.
5. When you want to reverse the charges on a call to another town, please tell the operator you want the call placed "collect" as soon as you place the call with her.

*Now  
it's...  
6 p.m.*



Reduced Rate Period on Long Distance Calls  
Begins at 6 P. M. Instead of 7 P.M.

Reduced Rates also apply all day on Sundays



## *For Your Convenience*

For your convenience and comfort in placing telephone calls, we have provided a telephone lounge which is located between the Service Club and the Gymnasium.

Special operators are on duty from 8 a.m. to 11 p.m. to assist you in placing your calls, to answer your questions, and to help in any way possible.

A spacious air-conditioned waiting room, comfortable chairs, davenports and writing desks are furnished here so you may relax comfortably when there is a delay in completing your call.

If you wish to visit the PX while waiting for your call, you may do so and our operators will page you over a loud speaker when the called party is on the line.

## HARRY SCHEID

*Telephone Manager  
at Douglas Army Air Field*

Telephone representatives on duty at the post are glad to help you in any way and to answer your questions.



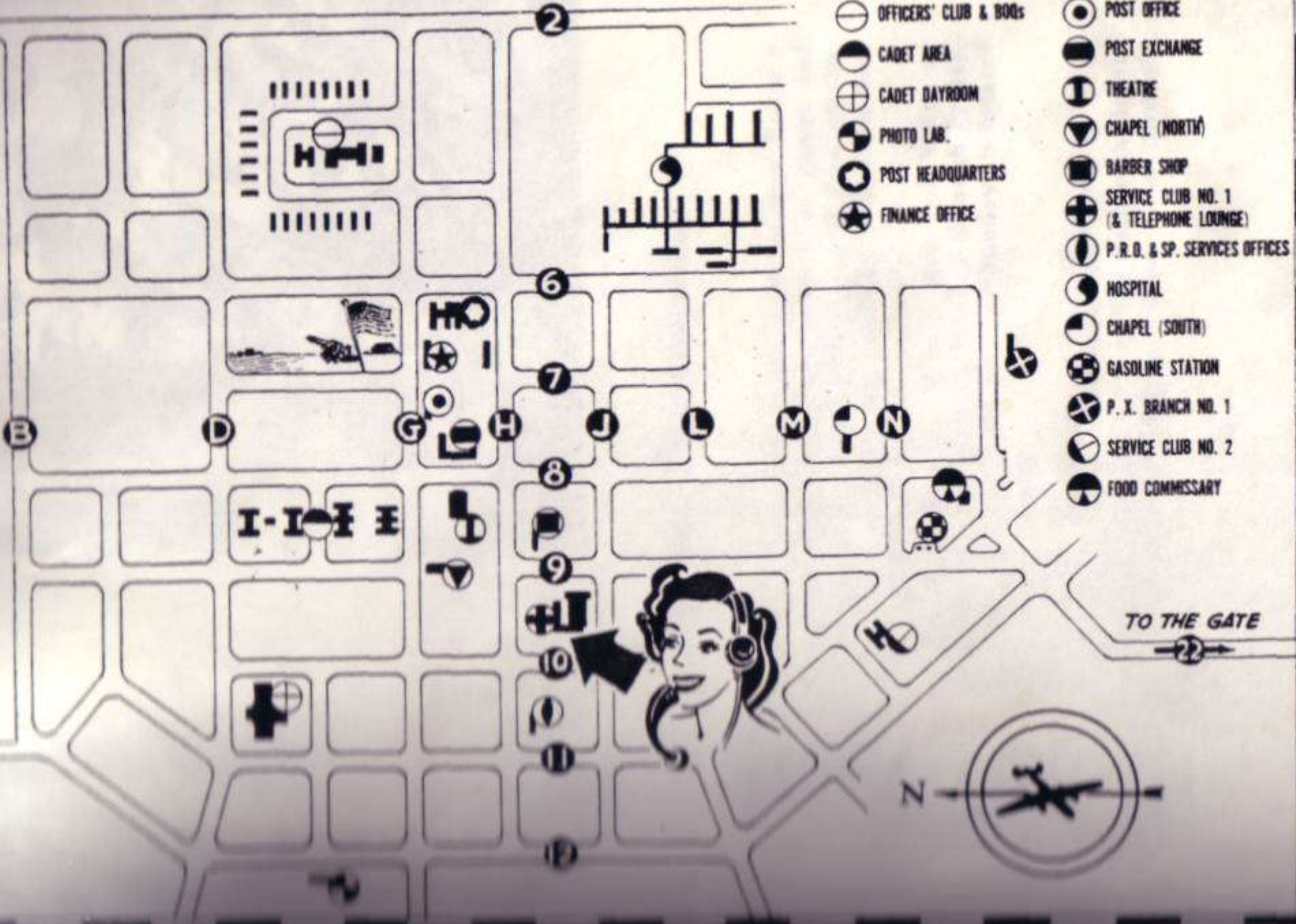
### A FEW TYPICAL LONG DISTANCE RATES

From Douglas Army Air Field to:	Station-to-Station		Person-to-Person	
	Day except Sunday	Night and Sunday	Day except Sunday	Night and Sunday
Albuquerque, N. M.....	\$1.00	\$ .65	\$1.35	\$1.00
Boston, Mass.....	3.75	2.75	4.75	3.75
Chicago, Ill.....	2.90	2.00	3.85	2.95
Dallas, Texas.....	1.75	1.25	2.35	1.85
Denver, Colo.....	1.60	1.15	2.15	1.70
Colo. Springs, Colo.....	1.50	1.10	2.00	1.60
Los Angeles, Calif.....	1.45	1.05	1.95	1.55
New York City, N. Y.	3.75	2.75	4.75	3.75
Nogales, Ariz.....	.60	.35	.90	.65
Phoenix, Ariz.....	1.30	.75	1.70	1.15
Prescott, Ariz.....	1.55	.90	1.95	1.30
San Francisco, Calif.....	2.00	1.40	2.65	2.05
Salt Lake City, Utah....	1.60	1.15	2.15	1.70
Tucson, Ariz.....	.75	.45	1.05	.75
Washington, D. C.....	3.50	2.50	4.50	3.50
Yuma, Ariz.....	1.60	.90	2.00	1.30

The above rates are for three minutes and do not include Federal Tax.

The operator will be glad to notify you at the end of three or five minutes.





- ⊖ OFFICERS' CLUB & BOQs
- ◐ CADET AREA
- ⊕ CADET DAYROOM
- ◑ PHOTO LAB.
- ⊙ POST HEADQUARTERS
- ✈ FINANCE OFFICE
- POST OFFICE
- ◑ POST EXCHANGE
- ◑ THEATRE
- ◑ CHAPEL (NORTH)
- ◑ BARBER SHOP
- ⊕ SERVICE CLUB NO. 1 (& TELEPHONE LOUNGE)
- ◑ P.R.O. & SP. SERVICES OFFICES
- ◑ HOSPITAL
- ◑ CHAPEL (SOUTH)
- ⊕ GASOLINE STATION
- ⊗ P. X. BRANCH NO. 1
- ◑ SERVICE CLUB NO. 2
- ◑ FOOD COMMISSARY

TO THE GATE



"WE'LL LIVE IN  
FAME OR GO DOWN  
IN FLAME"—



## *General Information*

### **SERVICE CLUBS:**

Service Club No. 1, located on Road H between Roads 9 and 10, features a refreshment bar, a stock of games and puzzles, a grand piano, a record collection and free movies. Open daily from 0800 to 2300, this building houses the Post Library, Telephone Room and War Corridor.

Service Club No. 2, open to enlisted men and WACs of Sections F and D from 1600 to 2300 Monday through Friday, 1400 to 2400 Saturday and 1400 to 2300 Sunday, is located at Roads R and 16.

### **LIBRARY:**

Open from 0800 to 2200 weekdays and 1000 to 2200 Sunday, the library in Service Club No. 1 is well stocked with books, magazines and daily newspapers from cities throughout the nation.



**WATER POLO**—A strenuous but enjoyable sport.

### **ATHLETIC AREA:**

The athletic area embraces baseball and softball diamonds, volleyball courts, swimming pool No. 1, a football field and an obstacle course. When going to the athletic area, which is located at the north end of the field and bounded by Roads B, 8, D, O and 13, do not enter the Cadet Area as it is off limits to enlisted men.

Swimming pool No. 2 for enlisted men and WACs of Sections F and D is located at Roads M and 6.

### **GYMNASIUM:**

Located on Road J between Roads 9 and 10, the gymnasium is connected by the war corridor to Service Club No. 1. It contains facilities for badminton, basketball, boxing, weight lifting and other sports, and is adjacent to a concrete tennis court. Graduation exercises are held in the gymnasium, as are parties and dances. At one end is a large stage where major theatrical productions may be presented.

### **BOWLING ALLEY:**

At the corner of Roads H and 8 is a five-lane bowling alley open to all post personnel and their guests. The charge is 20c per line, and the alleys are open from 1600 to 2300 on weekdays and 1200 to 2300 on Sunday. Soft drinks and beer are sold at a refreshment bar in the building. Ask at the bowling alley for information concerning bowling leagues for both men and women.

## POST THEATER:

The Post Theater, located across from the Post Exchange on Road 8 between Roads G and H, presents the latest movies twice nightly at 1900 and 2100 to military personnel, their families, and civilians living on the Post. Class A uniform is required and the admission price is 15c with coupon books available at a reduction. For the convenience of "swing-shifters," matinees are held at 1330 Tuesdays, Thursdays and Sundays.

## POST EXCHANGE:

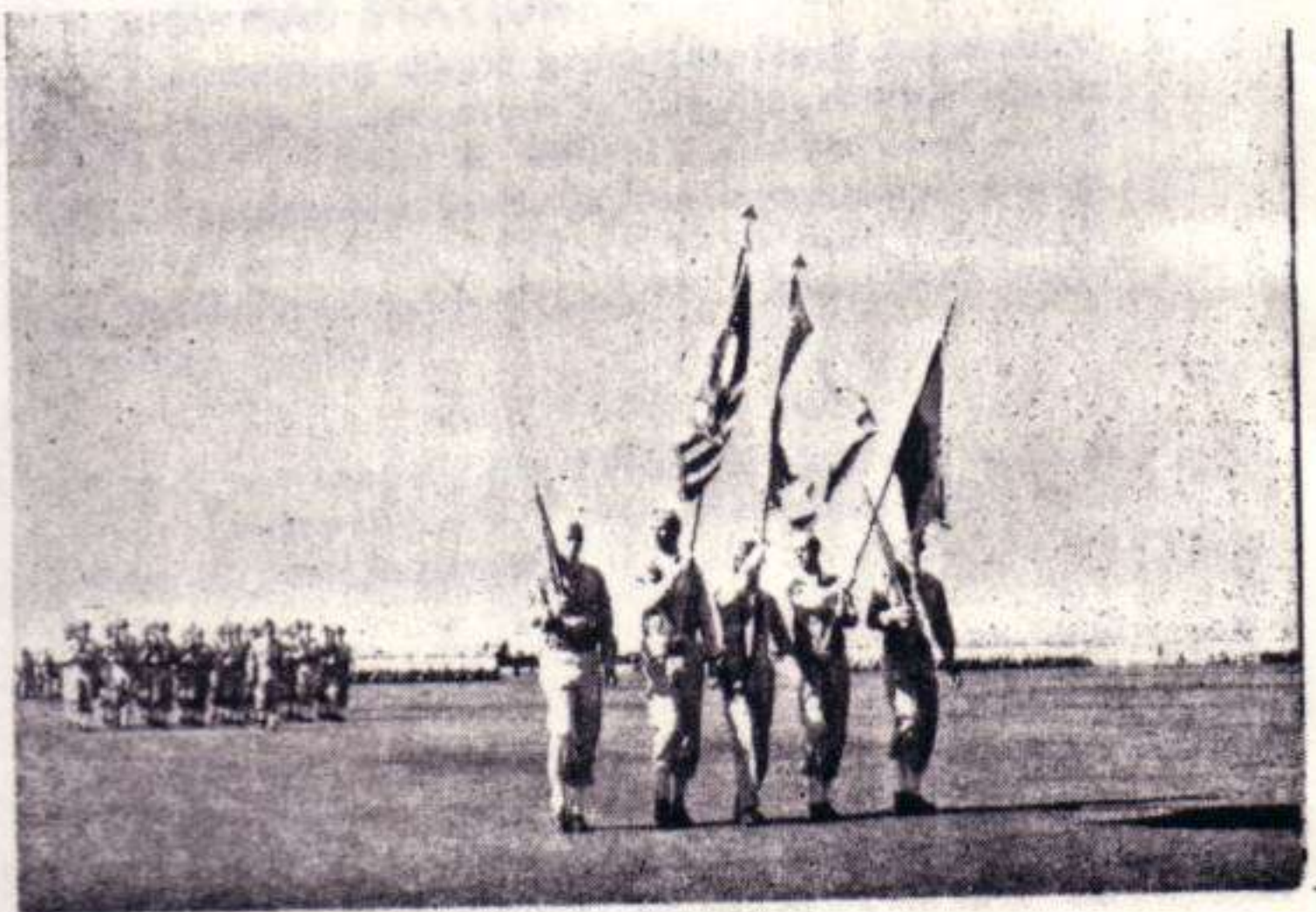
Open every day except Sunday from 0800 to 1700, the Post Exchange stocks candy, cigarettes, magazines, toilet articles, uniforms, insignia, athletic equipment, luggage and miscellaneous articles.

*Beer Bar:* Located in the rear of the main Post Exchange building is a beer bar which dispenses soft drinks and beer between the hours of 1400 and 2200 on weekdays and 1200 to 2200 on Sunday.

*Restaurant:* The Post Exchange Restaurant serves cafeteria style and is open daily from 0700 to 2200. Complete breakfasts, lunches, dinners, sandwiches, steaks and fountain service are available here. Because it is located in the civilian barracks area on Road M between Roads 6 and 8, it is sometimes referred to as the "civilian mess."

*Barber and Beauty Shop:* Open daily except Sunday from 0800 to 1700, the barber and beauty shop is located on Road H between Roads 8 and 9. The barber shop contains nine chairs and offers every service from hair cuts to shoe-

**"EYES RIGHT"**  
—The color  
guard salutes  
as DAAF  
personnel march  
in review.





shines. Maintained for the convenience of women employes of the post and for wives of military personnel, the beauty shop is fitted with modern equipment and shampoos, permanents, waves, dyes and bleaches are obtainable from skilled operators.

**Branches:** A Post Exchange and barber shop are maintained in the Section F area and are open from 1000 to 1900 each day except Sunday. A refreshment stand is operated from 0800 to 1700 daily except Sunday between the large hangar and maintenance shops at the extreme south end of the line for the convenience of line workers.

### **POST OFFICE:**

Regular mail service, including stamps, parcel post, money orders, registered and insured mail, is available at the Post Office between Roads 6 and 8 on Road G. Mail is taken from the base to Douglas at 0800, 1100 and 1700, and from Douglas to the base at 0930, 1230 and 1830. During the summer months the schedule changes from 1100 to 1200 going to town and 1230 to 1330 returning; all deliveries are on weekdays only.

### **TELEGRAPH OFFICE:**

The Western Union office in the Signal building at Roads H and 7 offers the same service as that available in town. Hours are 0700 to 2200 weekdays, 0800 to 2200 Sunday.

### **NCO CLUB:**

The only NCO Club on the field is the one maintained by Section F, with a lounge room and writing facilities available to members and their guests.

### **COMMISSARY AND GAS STATION:**

A commissary containing staple groceries, fresh vegetables, fruits, meats and cheese is operated by the Quartermaster at the extreme south end of Road 8. Officers' and enlisted men's wives may obtain commissary cards at the commissary building and make purchases from 1130 to 1730 each weekday. The Retail Gas Station at Roads 9 and N is open from 0800 to 1700 daily except Sunday.

### **NEWSPAPER:**

The official post newspaper, the "Flight Pattern," is published every other Friday by the Public Relations office and is distributed free to post personnel.

## **TRANSPORTATION:**

The Valley Transportation Company operates a bus line between Douglas and the air base. Schedules may be obtained at the bus terminal in Douglas. Roughly speaking, after 1700 on weekdays a bus leaves Douglas every hour on the half hour and leaves the base on the hour. After 1700 on Saturday and Sunday a bus leaves both Douglas and the base on the hour and half hour.

## **WAR ROOM AND TECH LIBRARY:**

The War Room located at Roads 8 and G features six-foot square large-scale maps of five war theaters and a larger World map. It is equipped with a long-range radio constantly tuned to news broadcasts, has International News Service wire teletype from 1300 till 2400 daily, and daily papers and technical magazines. The base technical library, in the rear of the war room, has books on all technical subjects connected with aviation, and a complete set of technical manuals. The war room is open from 0800 to 2400 daily; the tech library from 0800 till 1700 daily except Sunday.

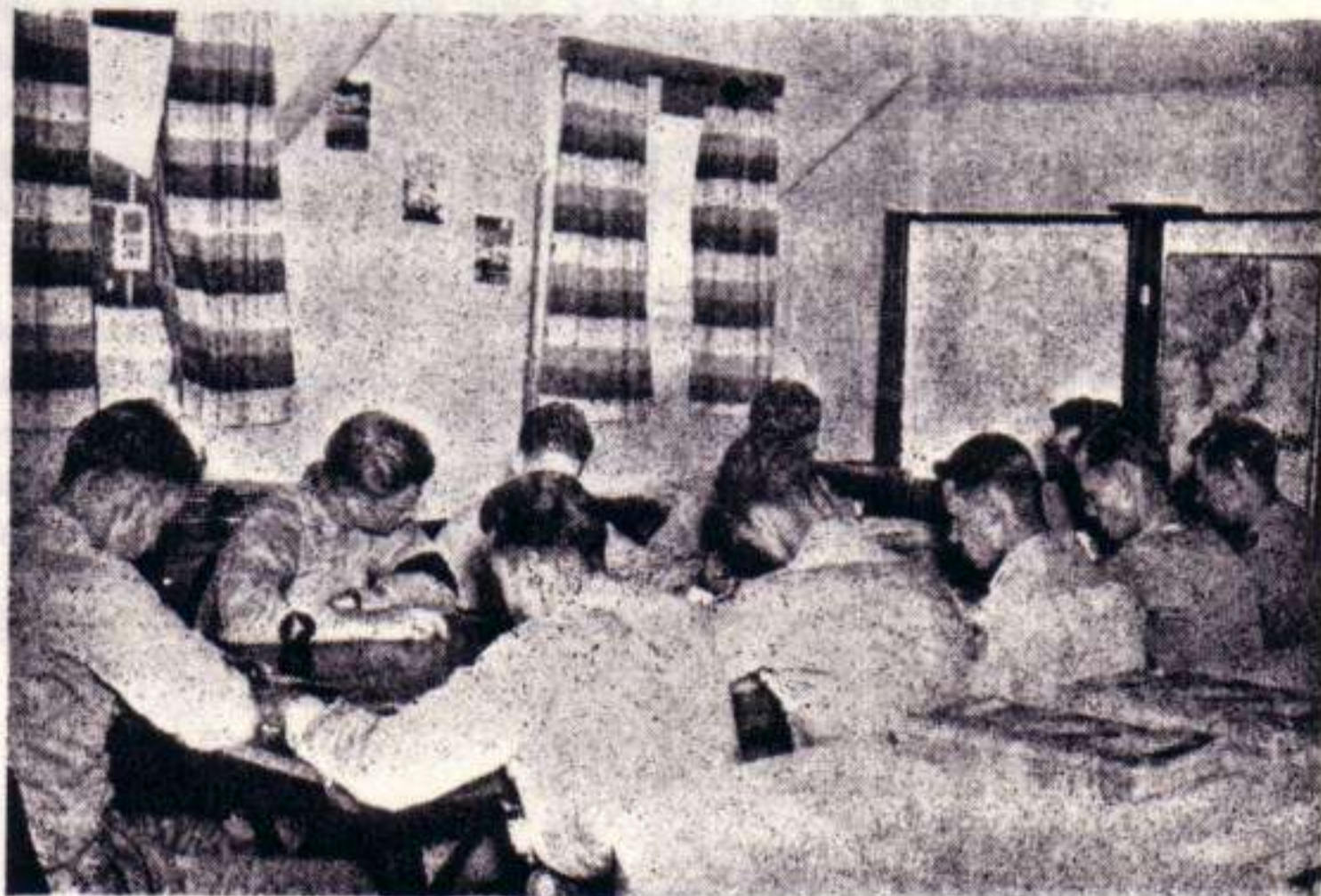
## **OFFICERS' CLUB:**

The Officers' Club, located in the BOQ area at the extreme northeast corner of the field bounded by Roads 1, 6, D and G, features a lounge, bar, swimming pool and tennis court, and is connected by a corridor with the Officers' Mess. Officers may pick up their mail at the post office, and officers' bulletin boards are in the War Room across the street from the post office.

## **RED CROSS:**

The Field Director's office, phone 324, is located in the

**STUDY HOUR**  
—Aviation  
cadets relax  
in the  
War Room  
and  
read the news  
of the day.



Chemical Warfare Building at the junction of Roads 1, R and 18, and is open from 0800 to 1700 daily except Sunday. The Field Director, Mr. Henry C. Cate, is on call nights and Sundays at BOQ No. 45, phone 285, in case of emergency.

### **CHAPEL SERVICES:**

The two Protestant chaplains assigned to this field may be found in North Chapel at Roads 9 and G, and the Catholic chaplain in South Chapel on Road 8 between Roads M and N. Protestant worship services are held at 1030 and 1900 on Sunday in North Chapel, with Bible Classes at 1000 and a Communion service at Morning Worship the first Sunday of each month. Christian Science service is held at 2000 in North Chapel each Tuesday, Mormon LDS Study Group at 1900 on Thursday, and Jewish service at 1900 on Friday. Catholic masses are held in South Chapel at 1030 and 1730 on Sunday and at 1715 on weekdays, and confessions are heard before and after all masses. General worship is held in the hospital recreation room at 1000 each Monday and Friday.

### **CAVE CREEK:**

DAAF maintains a rest camp at Cave Creek, 60 miles east of the field in the Chiricahua Mountains near Portal, Ariz., for the benefit of all military personnel, their families and friends. Built on an old Apache camping ground, Cave Creek has sleeping facilities, a mess hall, post exchange, miniature golf course, swimming pool and movies. Transportation is provided for all military personnel, but civilians must furnish their own. Further information may be obtained at orderly rooms or the special service office.

### **USO CLUBS:**

There are two exceptionally fine USO clubs in the city of Douglas, one on Tenth Street between G and H Avenues, and the other at 736 G Avenue. The Salvation Army maintains a Sleeping Center on Eleventh Street between F and G Avenues where soldiers may get a cot for 50c per night.

### **PERSONAL AFFAIRS OFFICER:**

The personal affairs officer can be reached each day except Sunday from 0800 to 1700 in the Processing Building. He is in charge of the Army Emergency Relief, and will assist all military personnel in handling correspondence on war bonds, insurance, allotments and other matters pertaining to family and personal affairs.



**"NICE MATERIAL"—Cadets buying their officer uniforms in anticipation of the "big day."**



**"GRADUATION DAY"**